

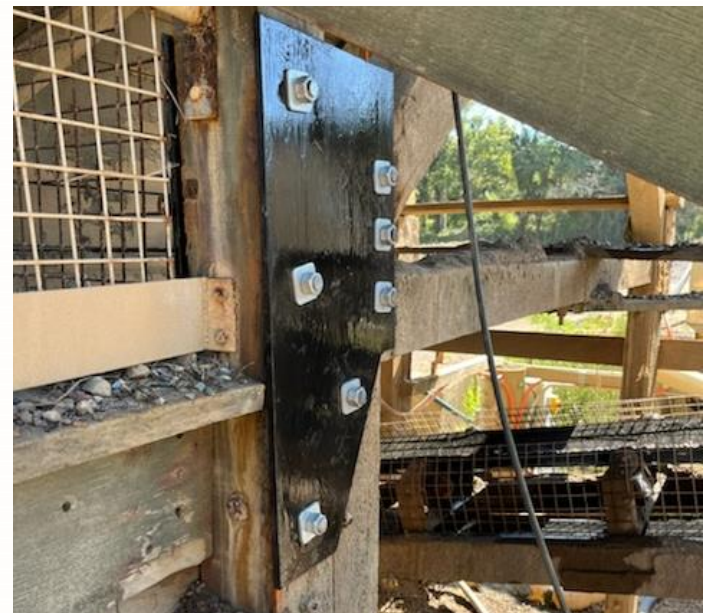
STEEL CONNECTION PLATE PROTECTION

| | |
|-------------|---|
| INDUSTRY | Quarrying |
| CLIENT | Byrne Bros Concrete |
| DISTRIBUTOR | ShieldCrete Australia 1800 364 776 www.shieldcreteinternational.com.au |
| APPLICATOR | Byrne Bros Concrete |
| PROJECT | Coating of steel connection plates for timber-framed aggregate screen building. |
| LOCATION | QLD, Australia |
| SYSTEM | Application of Polekote to 0.5mm over abrasive blasted steel |
| DATE | 2022 |

Description

Byrne Bros Concrete in Maryborough, Queensland reached out to ShieldCrete® after identifying that the galvanised steel plates used for the timber frame connections had corroded and basically disappeared in less than 6 years.

Upon replacing the steel plates, the client wanted to ensure that they would get more than 6 years out of their new plates. As a result, the non-galvanised steel plates were abrasive blasted and coated with Polekote by the Byrne Bros Staff to 0.5mm with a much quicker turnaround (and better long term prospects) than conventional systems.



Polekote was chosen as the protective coating due to high chemical resistance, high tensile strength, good elongation, and ease of future repairs if ever needed. The Polekote product is hand applied and comes in pre-measured blister packs where mixing is done before the packs are opened.

The life expectancy of the Polekote is more than triple that of the galvanised steel plate and allowed us to provide a much quicker turnaround than alternative products on the market.

